

# realMaterial

Our tactile surfaces transform windows into a haptic interior design experience.



Now discover more at  
[salamander-windows.com](https://salamander-windows.com)



„By using materials that are distinctively authentic, we give uPVC windows a whole new look.“

# myWindow: The right window for everyone

We don't see windows as purely technical products, but rather as elements linking living spaces and façades.

Windows affect interior ambience through light, heat input, view, ventilation and distinctive finishes. At the same time, windows impact on the façade design and also need to meet ecological, technical and safety criteria.

All these requirements cannot be fulfilled with a single standard but require intelligent solutions configured to match specific conditions, building features, architectural styles and individual preferences.

With our window systems, we pave a systematic path to the ideal window configuration.

Window colours and materials can have a major influence on your home's ambience. Salamander offers you a variety of colours, materials and tactile surfaces. Any window design requirement for living spaces and façades can then be met. Your personal preference is crucial for designing a home.

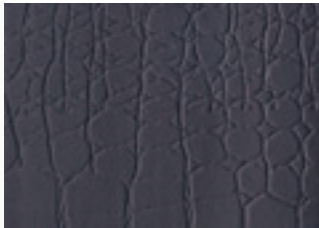
# realMaterial


Styling options from Salamander –  
for your home and interior design.



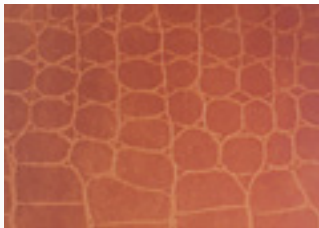
We transform uPVC windows into something special: Our specially developed surfaces transform windows into interior design elements. Get all the benefits of a uPVC window – with the look and feel of diverse and real materials. Customise your home down to the very last detail.


## Inside



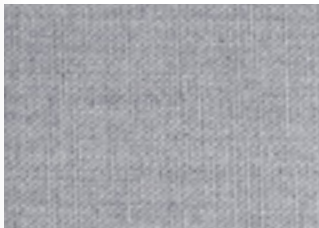
 upcycledLeather


Embossed bonded leather – made using scraps of real leather from production



 realTextile\*

Woven textile surfaces for light, modern rooms




 realWood\*

Real wood veneer for a natural living atmosphere

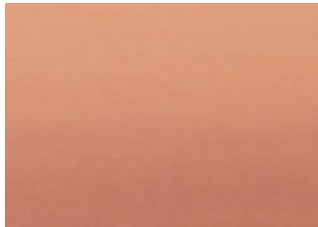



## Outside



 realMetal\*

Aluminium in a brushed stainless steel look



 realCopper\*

Untreated copper for a vintage look

realMaterials provide authentic materials for the greenEvolution modular system. The materials are applied to the profile by means of lamination.

Recycled materials are used in production. The windows can be re-introduced back into the material cycle in a standard process.

\* in development





**100% design.**  
**100% climate neutral.**  
**100% recycled.**

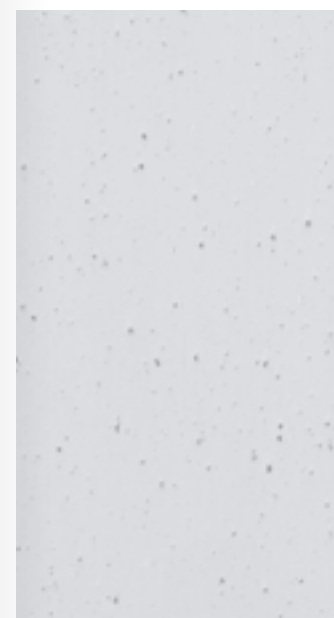
Greta™ combines attractive surfaces with maximum sustainability and optimal thermal insulation.

Our material experts have developed the Greta recycling formula which gives windows a great feel, look and colour. The profiles are produced carbon-neutral using energy from regenerative sources, and are 100% recyclable.

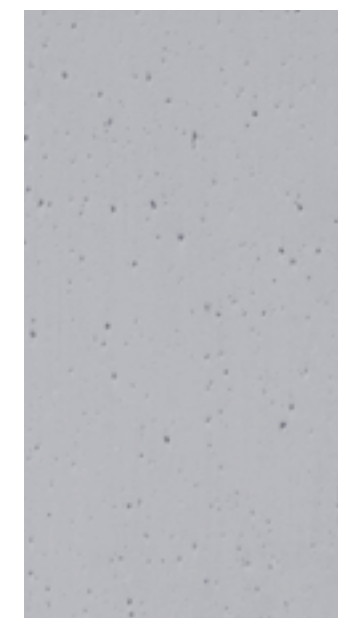
**Material properties:**

- Open-pore texture
- Natural look with shimmer effect
- With black gaskets

Light grey



Stone grey\*



Olive-grey\*



\* in development



# Rooms and façades with character

**The tactile realMaterial surfaces give your object a special, distinctive character. Suited to any architectural style.**

Window design contributes significantly to the overall look of a building, in both renovation and new build projects. Materials can be used to emphasize a building's

character or to create a contrasting, impressive mood by intentional breaks in style. realMaterial surfaces give your building character that can be seen and felt.

"We consider the house, living space and human being as a whole: the right window satisfies the requirement across the board."





# The most sustainable material for windows – PVC

Our window profiles have several lives since PVC can be reused over and over again.

From production through to recycling, PVC profiles pass through a continuous material cycle. Only very little energy is required to reprocess PVC, making it ideal for recycling: uPVC windows can be fully reprocessed to produce new profiles without any harmful emissions.

A comparison of window materials:

– PVC

– Timber

– Aluminium

## Insulation value

The contouring and heat conductivity of PVC result in ideal insulation values of up to 0.8 U<sub>f</sub>\*

- 0.8 U<sub>f</sub> –
- 1.2 – 1.5 U<sub>f</sub> –
- 6.1 U<sub>f</sub> \* –

\*With aluminium windows, the insulation value is ultimately determined by the PVC in the core

## Energy saving processing

PVC can be shaped and processed even at low temperatures; primary energy is saved during mixing and extrusion

- Working temperature approx. 200 °C –
- Working temperature between approx. 600 °C – 660 °C –

## Longevity

PVC windows need only minimal care and maintenance yet offer longer durability thanks to an optimised formula and more resilient surfaces

- Timber must be painted annually

## Stability

PVC remains permanently stable and functional due to the chemical and physical corner connection of the profiles

- Adhesive connections tend to suffer from fatigue

## Recyclability

The use of PVC enables a continuous material cycle since the material can be practically fully recycled

- PVC can be fully recycled up to seven times
- More than 80% of the material we use is already made of recycled PVC
- Only recycled materials are used in Greta windows
- Impregnated timber cannot be recycled
- The surface treatment of aluminium results in harmful substances during the recycling process

SALAMANDER  
WINDOW & DOOR SYSTEMS



# We assume responsibility – and take a far-sighted approach

We aim to create premium products and offer customers and partners the best possible service while using only the resources which are essential to this end. One key, ecological advantage of PVC is the fact that it can be completely recycled. That's why we deliberately use a percentage of recyclate, i.e. recycled uPVC, in our profiles: Old windows and doors are thereby turned back into useful raw material and can be used to produce new profiles.

Thanks to their long lifespan and excellent thermal insulation properties, the carbon footprint of our profile systems remains constantly low from the first production step through to their use in buildings.

Differentiated products are not only practical for our partners, but also environmentally efficient. For this reason, we develop profile systems which ideally satisfy many various requirements. When doing so, we avoid the use of materials which are harmful to the environment, e.g. glass fibre. Instead we use durable recycled materials which can be used over and over again: This enables us to reduce our CO<sub>2</sub> emissions from the very first stage of production.



Our water power plant





# Further decor

Find more information and  
decor colours online.

## Testing and certificates

- ISO 9001 certification  
(Quality management system)
- ISO 50001 certification  
(Energy management system)
- National and international product certifications  
(RAL, CSTB, ATG, STC and KOMO)
- Window system certifications  
(RAL system pass, IFT system pass, energy saving window)
- VinylPlus certification (sustainability)
- EPDs (environmental compatibility)

## Publication details

Publisher:

Salamander Industrie-Produkte GmbH  
Jakob-Sigle-Straße 58  
86842 Türkheim/Unterallgäu  
Germany

Telephone: +49 8245 52 0  
Fax: +49 8245 52 359  
info@salamander-windows.com  
salamander-windows.com

Management:  
Götz Schmiedeknecht  
Till Schmiedeknecht  
Wolfgang Sandhaus  
Wolfgang Auernheimer

Advisory Board:  
Dr. Heyo Schmiedeknecht

Legal form:  
Company with limited liability

Headquarters:  
Türkheim/Unterallgäu

Register court:  
Memmingen district court

Registration number:  
HRB 5175

VAT ID No.:  
DE129089528

© 2020,  
Salamander Industrie-Produkte GmbH,  
86842 Türkheim  
All right reserved.

Subject to changes, errors, printing and type setting mistakes.



# SALAMANDER

WINDOW & DOOR SYSTEMS

## We have the perfect window to suit your needs –

thanks to our decades of experience in profile development and PVC extrusion. Long-lasting, customisable and sustainable from the word go: We are continuously developing our systems to offer you the perfect window for the future today.

### Salamander Industrie-Produkte GmbH

Jakob-Sigle-Straße 58  
86842 Türkheim  
Germany

[salamander-windows.com](http://salamander-windows.com)